

# CORONA 101/102

Multi-Jet Meter | Wet Runner

**DIEHL**  
Metering



## APPLICATION

Domestic water meter

## FEATURES

- ▶ Extremely low pressure loss and considerably extended measuring range
- ▶ Records very small amounts of water consumption
- ▶ Maximum long-term accuracy and absolutely corrosion-resistant
- ▶ Measuring data better than specified by calibration regulations
- ▶ Strainer insert in inlet connection for cleaning without damaging the seal
- ▶ Capable of withstanding any load for a short time
- ▶ Forward and return metering
- ▶ Fine adjustment by regulating plug

# CORONA 101/102 Meter for horizontal pipes 101

Multi-Jet Meter | Wet Runner

## GENERAL

Meter for horizontal pipes 101		
Medium temperature range	°C	0 ... 30
Temperature safety	°C	0 ... 50
Ambient operating temperature	°C	0 ... 55
Ambient storage temperature	°C	0 ... 55
Nominal pressure	PN bar	16
Display range		0.05 l ... 999,999 m <sup>3</sup>
Protection class		IP 68

## TECHNICAL DATA

Nominal diameter	DN	mm	20	20	25	40	50
Permanent flow rate	Q <sub>3</sub>	m <sup>3</sup> /h	2.5	4	10	16	-
Nominal flow rate	Q <sub>n</sub>	m <sup>3</sup> /h	-	-	-	-	15
Overload flow rate	Q <sub>4</sub>	m <sup>3</sup> /h	3.125	5	12	20	-
Transitional flow rate	Q <sub>2</sub>	l/h	40	40	90	150	-
Minimum flow rate	Q <sub>1</sub>	l/h	25	25	40	80	-
Starting flow rate (MID)		l/h	4-6	4-6	6-8	20-25	-
Pressure loss at Q <sub>3</sub>		bar	0.6	0.6	0.6	0.6	-
Maximum flow rate (short-term)	Q <sub>max</sub>	m <sup>3</sup> /h	-	-	-	-	30
Transition flow rate	Q <sub>t</sub>	l/h	-	-	-	-	300
Minimum flow rate	Q <sub>min</sub>	l/h	-	-	-	-	80
Starting flow rate		l/h	-	-	-	-	25-30

\* Version flange

## APPROVAL

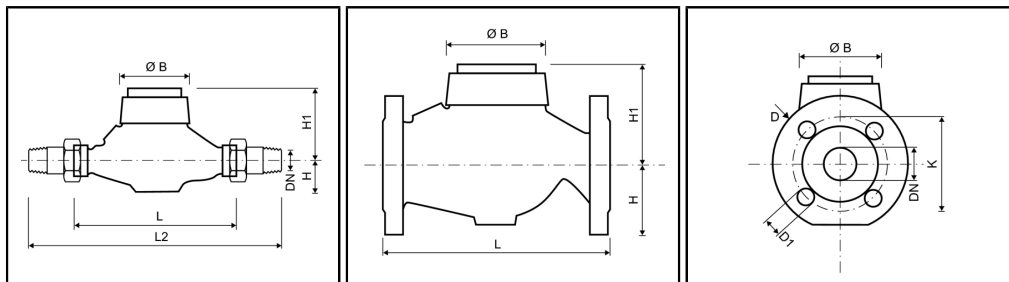
Nominal diameter	DN	mm	20	20	25	40	50
Permanent flow rate	Q <sub>3</sub>	m <sup>3</sup> /h	2.5	4	10	16	-
Nominal flow rate	Q <sub>n</sub>	m <sup>3</sup> /h	-	-	-	-	15
MID			TH 8628	TH 8628	TH 8628	TH 8628	-
Dynamic range horizontal installation (Q <sub>3</sub> /Q <sub>1</sub> )	R		80 / 100	40 / 80 / 160	50 / 80 / 100	50 / 80 / 100	-
EC			-	-	-	-	D 02 / 6.131.19
Metrological class			-	-	-	-	A•H / B•H

\* Version flange

# CORONA 101/102 Meter for horizontal pipes 101

Multi-Jet Meter | Wet Runner

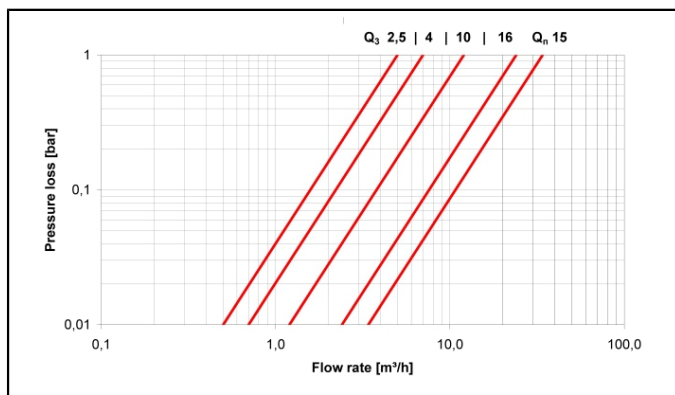
## DIMENSIONS



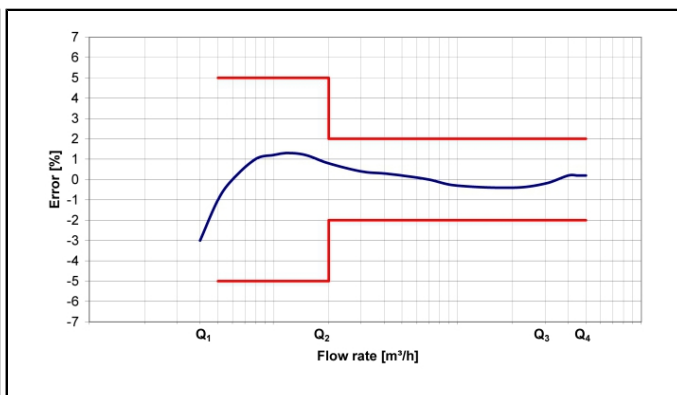
Nominal diameter	DN	mm	20	20	25	40	50
Permanent flow rate	$Q_3$	m <sup>3</sup> /h	2.5	4	10	16	-
Nominal flow rate	$Q_n$	m <sup>3</sup> /h	-	-	-	-	15
Overall length (DIN ISO 4064)	L	mm	190	190	260	300	270
Overall length with coupling	L2	mm	288	288	378	438	-
Connection thread on meter (ISO 228/1)		Inch	G1B	G1B	G1¼B	G2B	G2½B
Connection thread of coupling (DIN 2999)		Inch	R¾	R¾	R1	R1½	R2
Height	H	mm	41	41	44	46	83
Height	H1	mm	79	79	86	104	206
Diameter	Ø B	mm	98	98	104	137	165
Weight without coupling		kg	1.8	1.8	2.8	5.4	12.4

\* Version flange

## PRESSURE LOSS GRAPH / TYPICAL ERROR GRAPH



Pressure loss graph



Typical error graph

# CORONA 101/102 Meter for rising pipes 102

Multi-Jet Meter | Wet Runner

## GENERAL

		Meter for rising pipes 102	
Medium temperature range	°C	0 ... 30	
Temperature safety	°C	0 ... 50	
Ambient operating temperature	°C	0 ... 55	
Ambient storage temperature	°C	0 ... 55	
Nominal pressure	PN bar	16	
Display range		0.05 l ... 999,999 m <sup>3</sup>	
Protection class		IP 68	

## TECHNICAL DATA

Nominal diameter	DN	mm	20	20	25	40
Permanent flow rate	Q <sub>3</sub>	m <sup>3</sup> /h	2.5	4	10	16
Nominal flow rate	Q <sub>n</sub>	m <sup>3</sup> /h				
Overload flow rate	Q <sub>4</sub>	m <sup>3</sup> /h	3.125	5	12	20
Transitional flow rate	Q <sub>2</sub>	l/h	40	40	90	150
Minimum flow rate	Q <sub>1</sub>	l/h	25	25	40	80
Starting flow rate (MID)		l/h	4-6	4-6	6-8	20-25
Pressure loss at Q <sub>3</sub>		bar	0.6	0.6	0.6	0.6

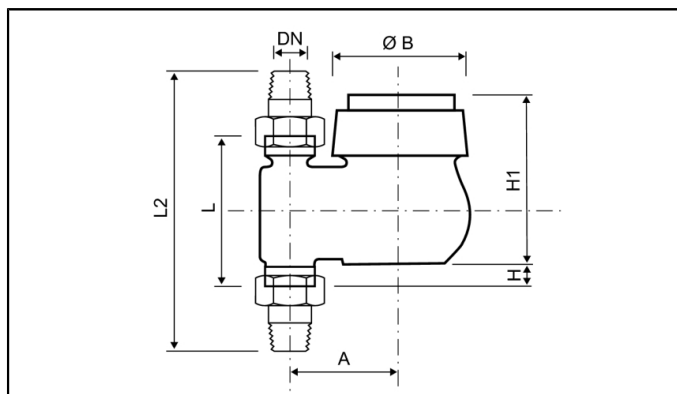
## APPROVAL

Nominal diameter	DN	mm	20	20	25	40
Permanent flow rate	Q <sub>3</sub>	m <sup>3</sup> /h	2.5	4	10	16
Nominal flow rate	Q <sub>n</sub>	m <sup>3</sup> /h				
MID			TH 8628	TH 8628	TH 8628	TH 8628
Dynamic range horizontal installation (Q <sub>3</sub> /Q <sub>1</sub> )	R		80 / 100	40 / 80 / 160	80	80

# CORONA 101/102 Meter for rising pipes 102

Multi-Jet Meter | Wet Runner

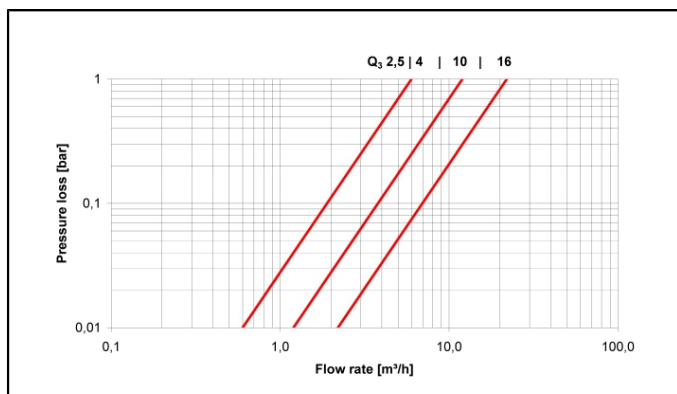
## DIMENSIONS



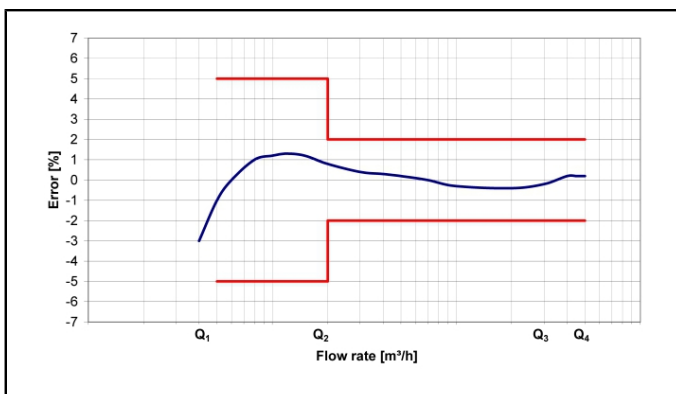
Nominal diameter	DN	mm	20	20	25	40
Permanent flow rate	Q <sub>3</sub>	m <sup>3</sup> /h	2.5	4	10	16
Nominal flow rate	Q <sub>n</sub>	m <sup>3</sup> /h				
Overall length (DIN ISO 4064)	L	mm	105	105	150 (135)*	200 (150)*
Overall length with coupling	L2	mm	203	203	268 (253)	338 (288)
Connection thread on meter (ISO 228/1)		Inch	G1B	G1B	G1¼B	G2B
Connection thread of coupling (DIN 2999)		Inch	R¾	R¾	R1	R1½
Height	H	mm	18	18	31	21
Height	H1	mm	118	118	130	147
Diameter	Ø B	mm	98	98	101	136
Width	A	mm	82	82	95	120
Weight without coupling		kg	1.9	1.9	3.2	6.3

\* Special overall length on request

## PRESSURE LOSS GRAPH / TYPICAL ERROR GRAPH



Pressure loss graph



Typical error graph